

Defective charging and "switch on impossible" - syndrom for TH-F6 or F7

Author: Josef

If you have the following problem with your TH-F7 or TH-F6:

1. Mistake description:

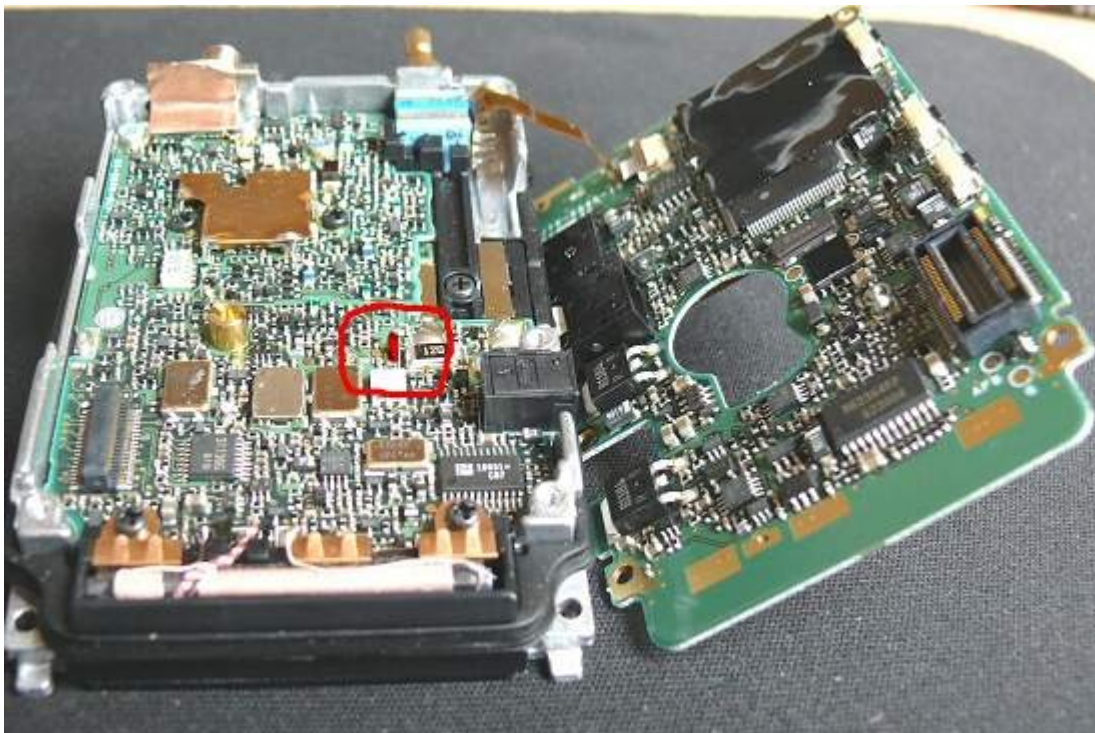
The device cannot be turned on, neither with battery, nor with external electricity supply and the battery cannot be loaded.

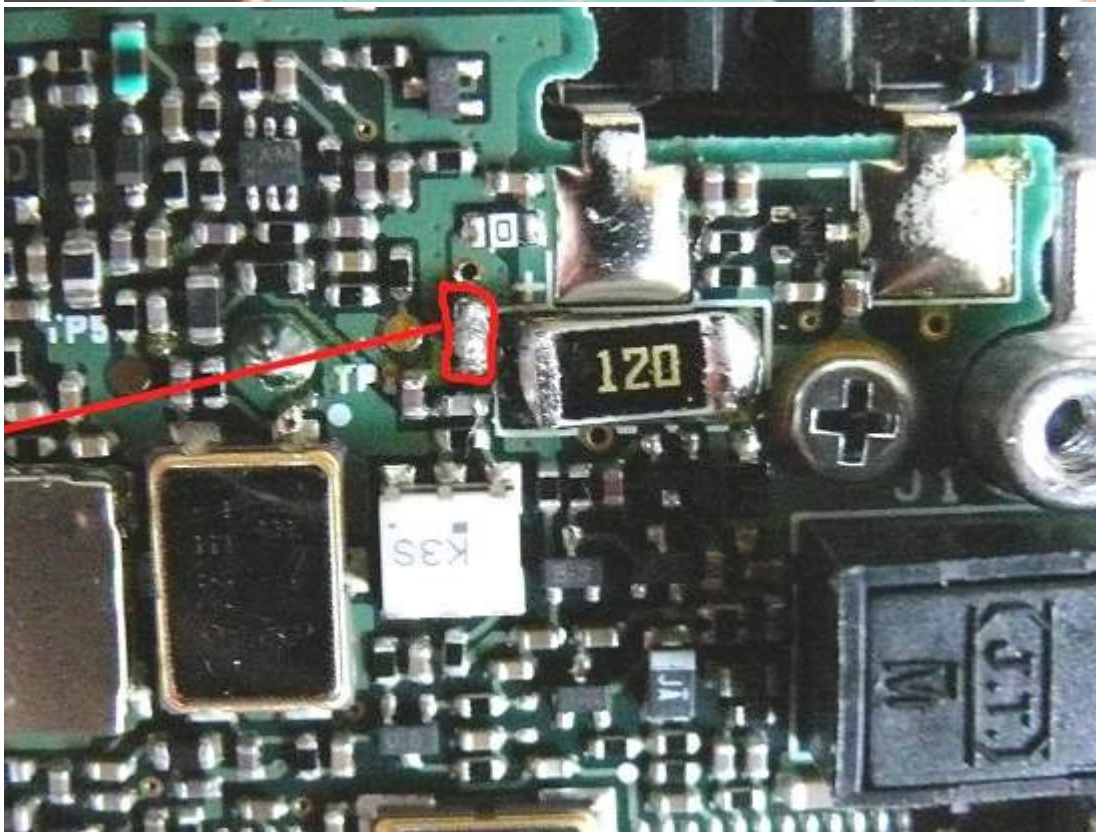
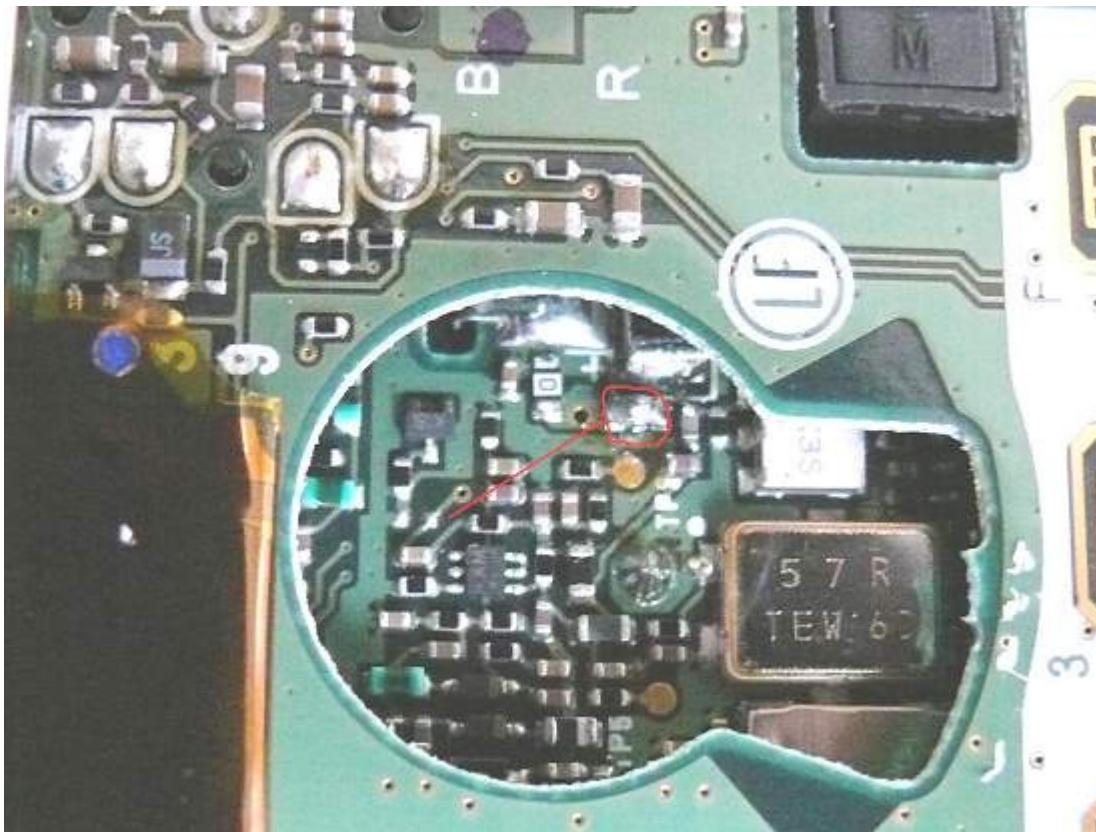
I and also other OM`s had this problem several times with a TH-F7. In all cases a SMD fuse was defective inside of the device. I would like to describe here, on the bases of pictures, where this fuse is located, so that a new one can be replaced for this. In the pictures I have bridged this fuse for test simply with a solderpoint, because I didn`t have a new one. Now my TH-F7 works great again. The fuse is usually marked with a "F" on top of it, but you see also the location on the pictures very well.

For getting a new fuse, please call your kenwood dealer. I-??m sure they know what fuse is ment .:-)

How to avoid the Problem:

When charging/using an external power supply, first connect the jack to the transceiver, then plug the charger/power supply into the wall (this sequence is also described in the user manual) . When charged, first unplug the charger/power supply from the wall then unplug the power jack from your transceiver. If you pay attention to this, the fuse might not get broken any more.





best regards

Josef

